

Permalloy

Material

PC (78~80% Ni)

PB (45~50% Ni)

Thickness (mm)

0.15, 0.2, 0.35, 0.5, 0.6, 0.75, 1.0, 1.5

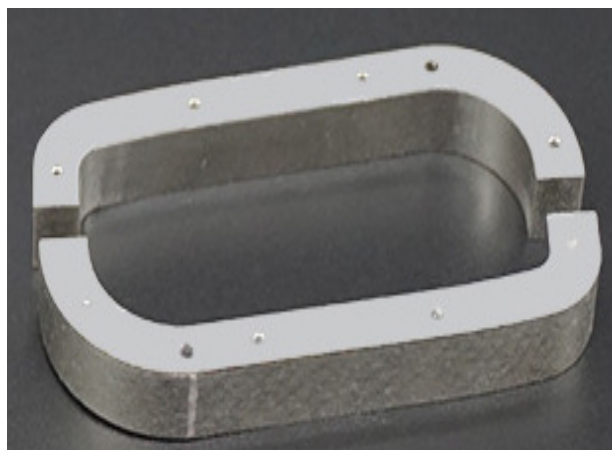
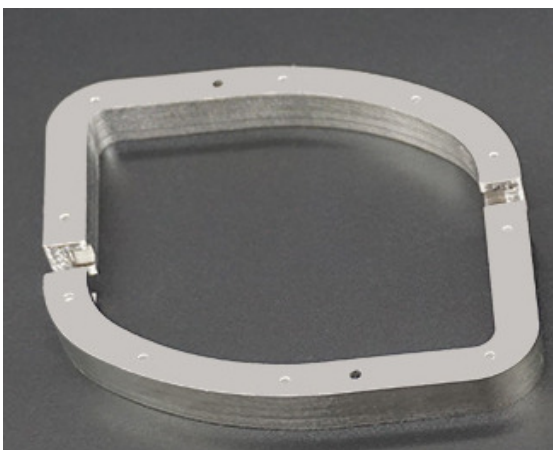
0.15, 0.2, 0.35, 0.5

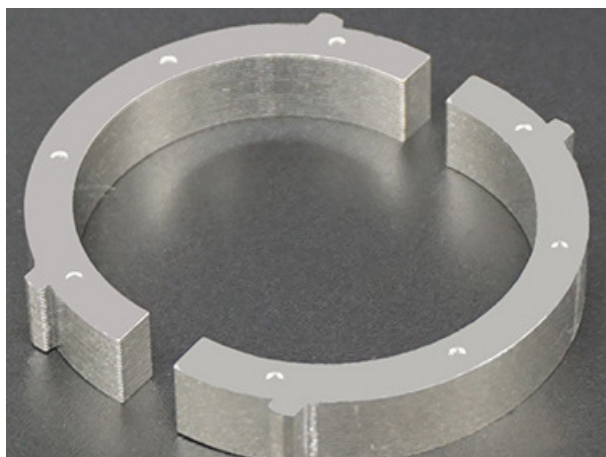
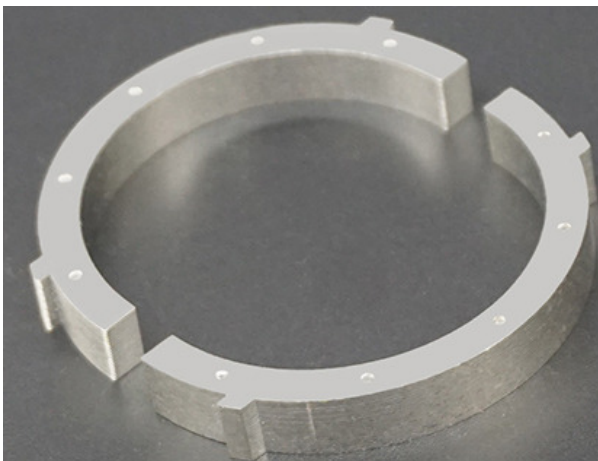
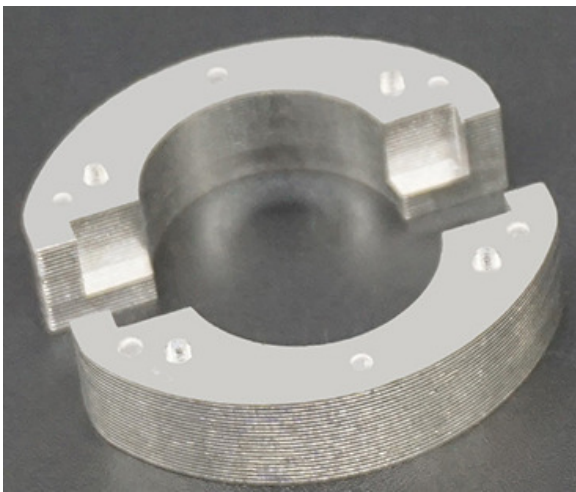
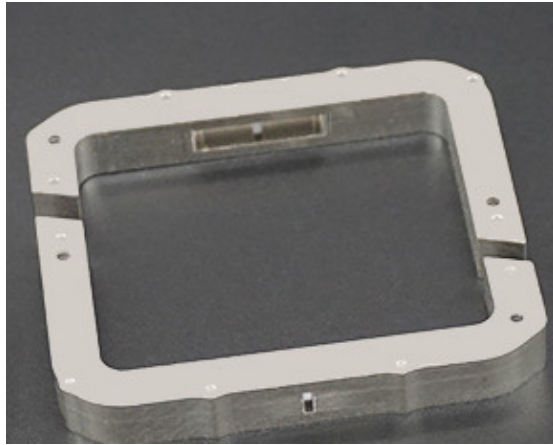
Sensor core

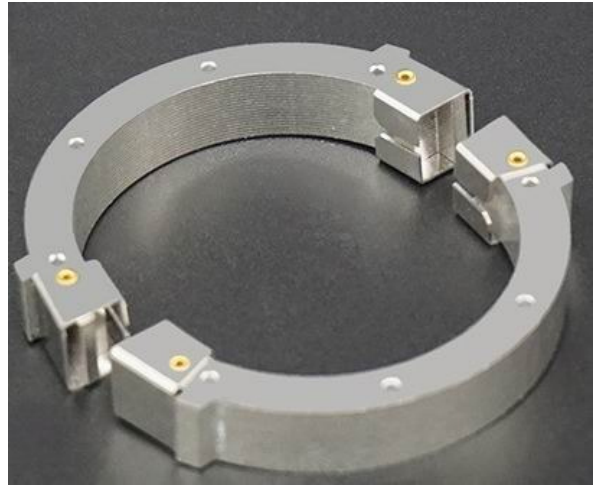
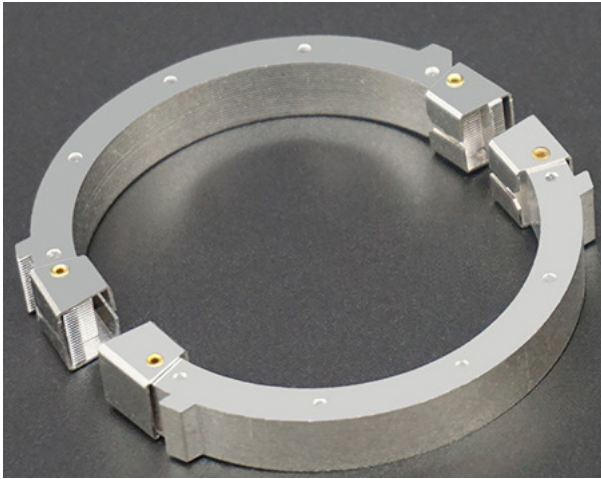
Application

Current clamp meter, hall effect sensor, electronic components that function to detect variations of electric current or magnetic flux to start magnetic response.

Note: All cores below shown are custom design with private tooling







Packing condition



Selmag Enterprise Co Ltd

www.selmag.com.tw E-mail : service@selmag.com.tw

4F.,No.10 Alley 8, Lane 45 Baoxing Road, Xindian Dist., New Taipei City 23145, Taiwan. R.O.C.

Tel: 886-2-2918-9913 Ex.11 Contact: Eliza Hu (elizahu@selmag.com.tw)