

Inductor For Automotive

Power Inductor (Automotive reliability comply)

1.)



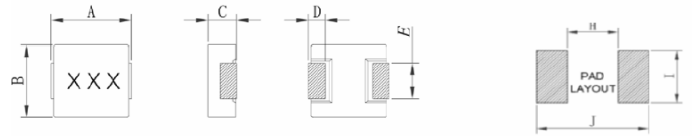
High Power Inductors:

L: 0.22~22 uH (1.8~24 A)

AEC-Q200 Grade 1

P/N: TCQ2001 IM Series

Size: 0310~0402



2.)



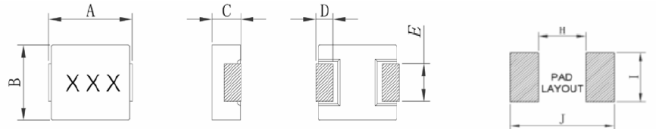
High Power Inductors:

L: 0.22~15 uH (1.8~12 A)

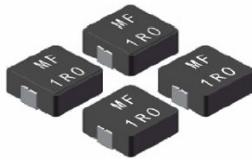
AEC-Q200 Grade 0

P/N: TCQ2000 PI Series

Size: 0312~0402



3.)



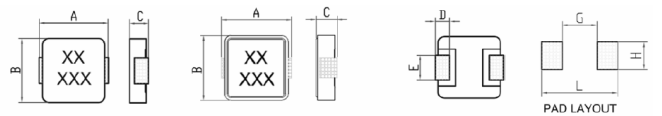
High Power Inductors:

L: 0.68~47 uH (3.2~52 A)

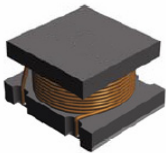
AEC-Q200 Grade 1

P/N: TCQ2001 MF Series

Size: 0603~1207



4.)



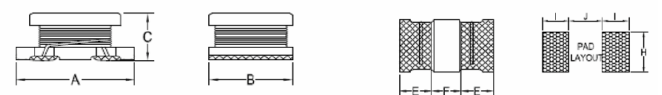
Chip Choke Coil:

L: 6.8~330 uH (0.17~1.35 A)

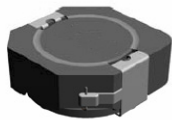
AEC-Q200 Grade 1

P/N: TCQ2001 SDR Series

Size: 322520~453226



5.)



Shielded Power Inductors:

L: 6.8~330 uH (0.68~5.6 A)

AEC-Q200 Grade 1

P/N: TCQ2001 DRH Series

Size: 104~105



6.)



Shielded Power Inductors:

L: 3.5~330 uH (1.54~13 A)

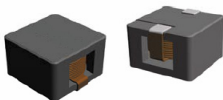
AEC-Q200 Grade 1

P/N: TCQ2001 DRRI Series

Size: 127



7.)



Flat Wire Coil Inductors:

L: 0.22~3.3 uH (2.8~19.5 A)

AEC-Q200 Grade 1

P/N: TCQ2001 ER Series

Size: 64~65



8.)



High Current Choke Inductors:

L: 1.5~34.9 uH (5.5~25 A)

AEC-Q200 Grade 1

P/N: TCQ2001 ROD Series

Size: 3x15~5x25



Contact: Selmag Enterprise Co.,Ltd.

Tel: 02-2918-9913 Attn: Eliza Hu Ext.11 E-mail: elizahu@selmag.com.tw Mobile: 886-0938-120-186